

Model 51-RHS, 76-RHS, 101-RHS, & 201-RHS AC Condensing Units



Model 101-RHS-AC

The Models 51-RHS, 76-RHS, 101-RHS, & 201-RHS condensing units are sized and configured to match Howe Rapid Freeze ice flakers. These units are designed for unexcelled quality, reliability, and long life. They are durable, energy efficient and they provide a high degree of flexibility to a wide diversity of industrial applications.

Standard Features

- High efficiency Copeland discus compressors with POE Oil.
- Thermally protected permanently lubricated ball bearing condenser fan motors.
- Electrical controls including compressor contactor and ice flaker interconnect wiring are located easily accessible control box with hinged cover.
- Head pressure control system
- Suction & liquid vibration eliminators.
- Liquid line filter-drier and sight glass.

Special Features

- Contact points to connect with flaker control panel to monitor low oil pressure, high discharge pressure, low suction pressure (pump-down), and compressor running conditions.
- Suction Accumulator
- Oil Separator with oil return line.
- Separate high pressure, low pressure control switches
- Oversized, heated & insulated receiver.

Optional Features

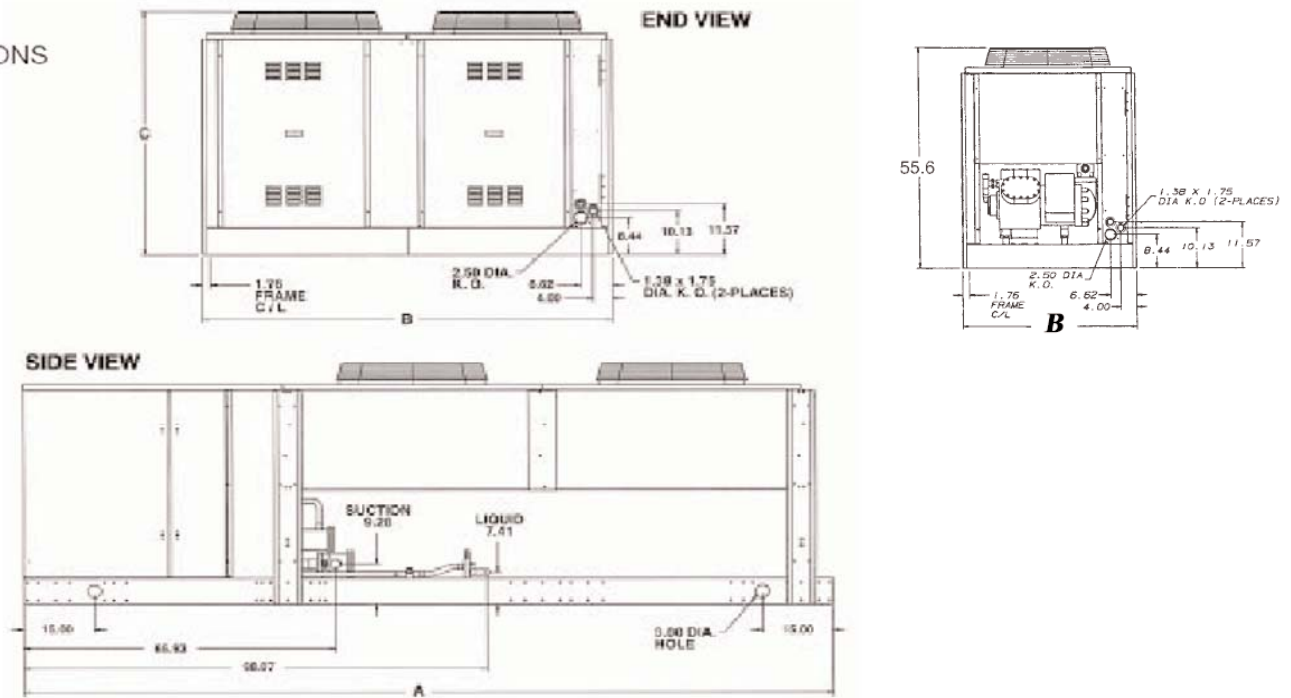
- Coated condenser coils for harsh environments.

Diversity of Applications for Rapid Freeze Machines

- | | | |
|-----------------------|------------------------|-----------------------|
| • Produce Harvesters | • Seafood Processors | • Poultry Processors |
| • Produce Wholesalers | • Seafood Distributors | • Concrete Cooling |
| • Produce Markets | • Meat Processors | • Amusement Parks |
| • Industrial Bakeries | • Sausage Processors | • Industrial Catering |

Model 51RHS, 76RHS, 101RHS, 201-RHS **HIGH AMBIENT**

DIMENSIONS



HIGH AMBIENT Condensing Unit Information

Models 51 & 76-RHS have one row of fans

Model No.	Dimensions						Connection Sizes		Shipping Weight lbs. / kg.
	Inches			Centimeters			Suction	Liquid	
	A	B	C	A	B	C			
51-RHS	144	44.5	56	366	113	142	2-1/8	7/8	1880 / 854
76-RHS	170.7	44.5	56	434	113	142	2-1/8	7/8	2460 / 1117
101-RHS	144	88	56	366	224	142	2-5/8	1-1/8	3760 / 1707
201-RHS *	171	88	56	434	224	142	2-5/8	1-1/8	3950 / 1794

HIGH AMBIENT ELECTRICAL SPECS R-404A

Voltage	Model	Compressor (Each)		Condenser Fan Motor			Unit	
		R.L.A.	L.R.A.	Qty.	HP	F.L.A.	M.C.A.	M.O.P.
208-230/3/60	51-RHS	66	374	2	1-1/2	8.0 x 2	80	125
	76-RHS	95.6	470	2	1-1/2	14 x 2	121	200
	101-RHS	66 x 2	374 x 2	4	3/4	16 x 4	145.8	200
	201-RHS	80.0 x 2	450 x 2	4	3/4	4.0 x 4	179.0	250
460/3/60	51-RHS	33	187	2	1-1/2	4.0 x 2	40	60
	76-RHS	47.8	235	2	1-1/2	7 x 2	61	100
	101-RHS	33 x 2	187 x 2	4	3/4	8 x 4	72	100
	201-RHS	40.4 x 2	225 x 2	4	3/4	2.0 x 4	89.5	125

Suction accumulator is provided with Howe furnished condensing unit.

*** Model 201 ice flaker requires (2) 201-RHS condensing units.**



NSF, ETL Approved.