



MODULAR REMOTE HIGH SIDE AIR COOLED CONDENSING UNITS

Model 51-RHS, 76-RHS, 101-RHS, 201-RHS AC Condensing Units



The Models 51-RHS, 76-RHS, 101-RHS condensing units are sized and configured to match Howe Rapid Freeze ice flakers. These units are designed for unexcelled quality, reliability, and long life. They are durable, energy efficient and they provide a high degree of flexibility to a wide diversity of industrial applications.

Standard Features

- High efficiency Copeland discus compressors with POE Oil.
- Thermally protected permanently lubricated ball bearing condenser fan motors.
- Electrical controls including compressor contactor and ice flaker interconnect wiring are located easily accessible control box with hinged cover.
- Head pressure control system
- Suction & liquid vibration eliminators.
- Liquid line filter-drier and sight glass.

Special Features

- Contact points to connect with flaker control panel to monitor low oil pressure, high discharge pressure, low suction pressure (pump-down), and compressor running conditions.
- Suction Accumulator
- Oil Separator with oil return line.
- Separate high pressure, low pressure control switches
- Oversized, heated & insulated receiver (Std amb., Not included with moderate units)>

Optional Features

- Coated condenser coils for harsh environments.
- Oversized condensing units rated for 110°F ambient conditions.

Model 101-RHS-AC

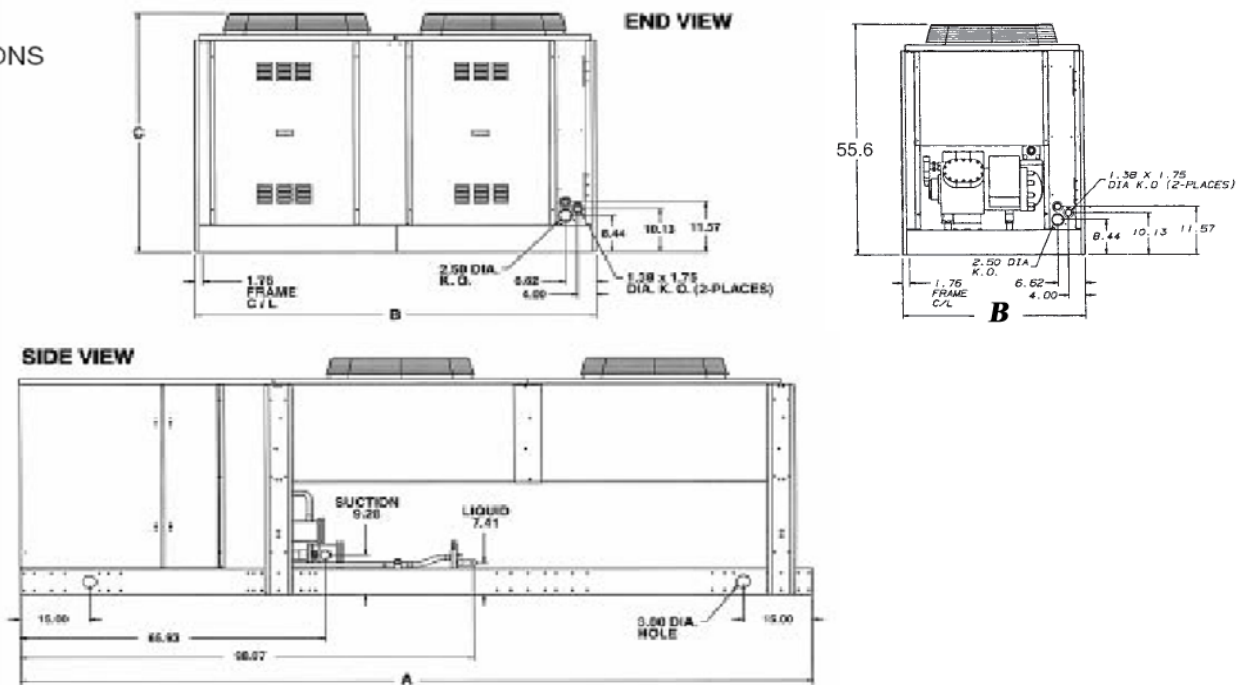
Diversity of Applications for Rapid Freeze Machines

- | | | |
|-----------------------|------------------------|-----------------------|
| • Produce Harvesters | • Seafood Processors | • Poultry Processors |
| • Produce Wholesalers | • Seafood Distributors | • Concrete Cooling |
| • Produce Markets | • Meat Processors | • Amusement Parks |
| • Industrial Bakeries | • Sausage Processors | • Industrial Catering |



Model 51RHS, 76RHS, 101RHS, 201-RHS

DIMENSIONS



Condensing Unit Information

model 51 & 76-RHS have single rows of fans

Model No.	Dimensions						Connection Sizes		Shipping Weight lbs. / kg.
	Inches			Centimeters			Suction	Liquid	
	A	W	C	A	B	C			
51-RHS	144	44 1/2	55 5/8	366	113	141	2-1/8	7/8	1980 / 899
76-RHS	170.7	44 1/2	55 5/8	434	113	141	2-1/8	7/8	2370 / 1076
101-RHS	144	88	55 5/8	366	224	141	2-5/8	1-1/8	3600 / 1635
201-RHS*	144	88	55 5/8	366	224	141	2-5/8	1-1/8	3760 / 1703

ELECTRICAL SPECS R-404A

Voltage	Model	Compressor (Each)		Condenser Fan Motor			Unit	
		R.L.A.	L.R.A.	Qty.	HP	F.L.A.	M.C.A.	M.O.P.
208-230/3/60	51-RHS	52.6	278	2	1-1/2	8.0 x 2	67.0	110
	76-RHS	80.8	450	2	1-1/2	7.0 x 2	104.5	175.
	101-RHS	52.6 x 2	278 x 2	4	3/4	4.0 x 4	122.2	150.
	201-RHS	66 x 2	374 x 2	4	3/4	4.0 x 4	145.8	200.
460/3/60	51-RHS	26.3	139	2	1-1/2	4.0 x 2	33.5	50
	76-RHS	40.4	225	2	1-1/2	3.5 x 2	52.3	80
	101-RHS	26.3 x 2	139 x 2	4	3/4	2.0 x 4	61.1	80
	201-RHS	33 x 2	187 x 2	4	3/4	2.0 x 4	72.9	100
380/3/50	51-RHS	33	187	2	3/4	4.0 x 2	40	60
	76-RHS	47.8	235	2	3/4	7.0 x 2	61	100
	101-RHS	33 x 2	187 x 2	4	3/4	4.0 x 2	145.8	200

Suction accumulator is provided with Howe furnished condensing unit.

ELECTRICAL SPECS R-22

Voltage	Model	Compressor (Each)		Condenser Fan Motor			Unit	
		R.L.A.	L.R.A.	Qty.	HP	F.L.A.	M.C.A.	M.O.P.
208-230/3/60	51-RHS	52.6	278	2	1-1/2	8.0 x 2	67.0	110
	76-RHS	80.8	450	2	1-1/2	7.0 x 2	104.5	175
	101-RHS	66 x 2	374 x 2	4	3/4	4.0 x 4	145	200
460/3/60	51-RHS	26.3	139	2	1-1/2	4.0 x 2	33.5	50
	76-RHS	40.4	225	2	1-1/2	3.5 x 2	52.3	80
	101-RHS	33 x 2	187 x 2	4	3/4	8.0 x 4	72.9	100
380/3/50	51-RHS	33	187	2	3/4	4.0 x 2	40	60
	76-RHS	47.8	235	2	3/4	7.0 x 2	61	100
	101-RHS	40.4 x 2	225 x 2	4	3/4	3.5 x 2	110.5	150

* Model 201G ice flaker requires (2) two 201-RHS condensing units.



NSF, ETL Approved.