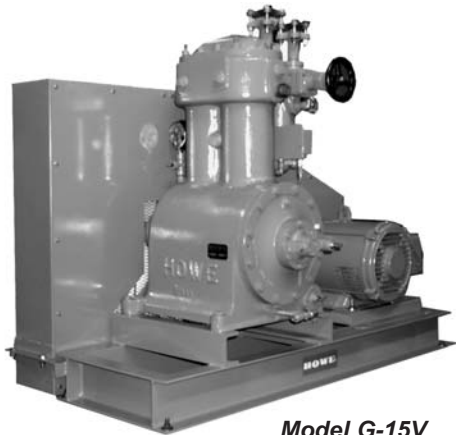


Model AA-23V-M



Model AW-23V-M



Model G-15V

## Ammonia Pump-Out Equipment

**Simplify compliance with OSHA and environmental regulations on Ammonia recovery.** With Howe heavy-duty, slow speed ammonia pump-out compressors compliance has never been easier. Howe's 3" x 3" reciprocating compressor is small and compact enough for "**portable**" recovery and recycling service in industrial ammonia refrigeration systems. Compressor units are available with air-cooled or water cooled heads. Units can be built up with accessories to self-contained packages.

**Improve maintenance and personnel efficiency** Consider the savings in service cost that an in-plant ammonia pump-out system can provide for your Process Safety Management. Often times, Howe's G-15 reciprocating compressor has "whole plant" recovery capabilities. Water-cooled self-contained packages are available.

### FLEXIBILITY

Many electrical options available.

### LOW MAINTENANCE

Substantially lower than some brands of compressors.

These compressors are designed for use as pump-out units.

While they can pump down to 0 psi, they are not designed nor intended for use as vacuum pumps.

## Diversity of Applications for Ammonia Pump-out compressor packages

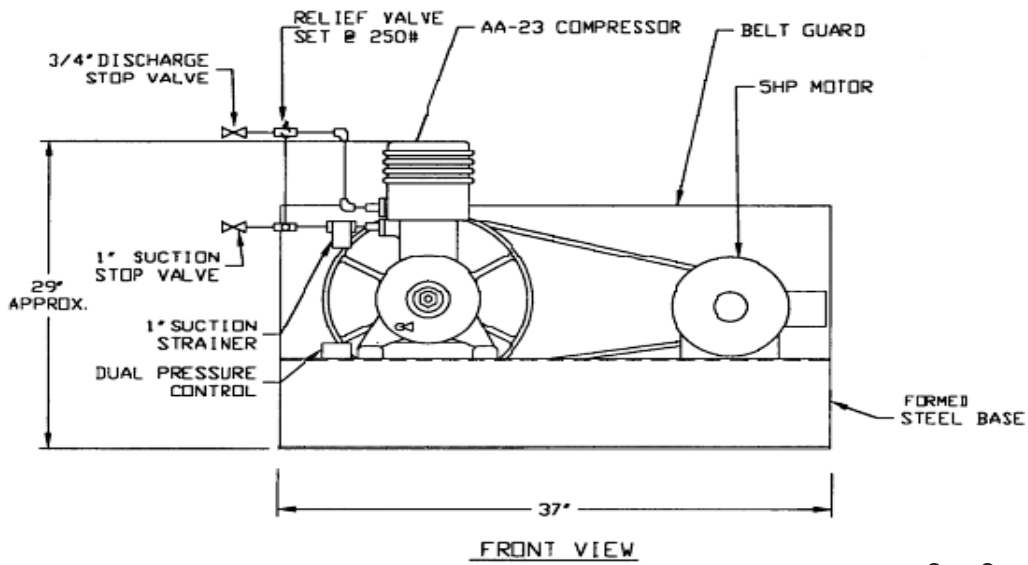
### Mobile Models

AA-23V-M 3 x 3 Air Cooled  
AW-23V-M 3 x3 Water Cooled

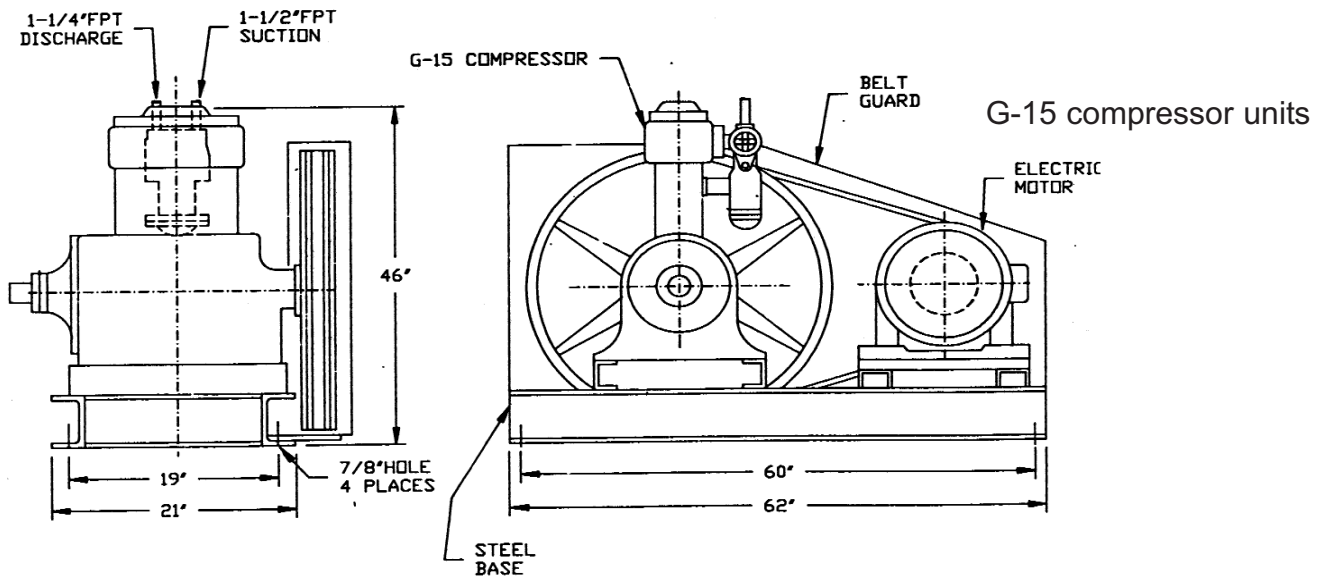
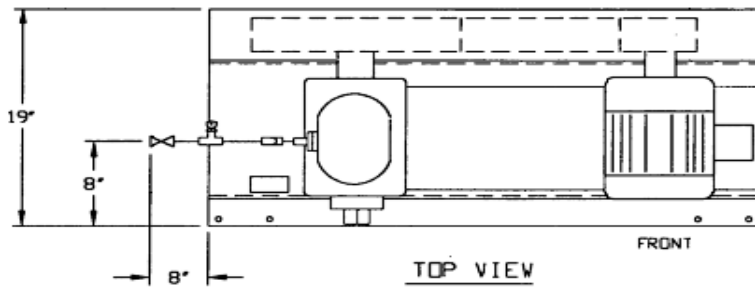
### Stationary Models

AA-23V 3 x 3 Air Cooled  
AW-23V 3 x3 Water Cooled  
G-15 5-1/2 x 5-1/2 Water cooled





3 x 3 compressor units



Model		HP	RPM	CFM
AA-23V(-M)	Air Cooled	5	410	10
AW-23V(-M)	Water Cooled	5	410	10
G-15	Water Cooled	20-30	440	66.5

