

# Rapid Freeze RECIRCULATED AMMONIA

## Selective Purpose Ice Flaker

COOL SOLUTIONS SINCE 1912

## HOWE Proven. Best Choice.™

Rapid Freeze Recirculated Ammonia ice flakers feature unexcelled quality, reliability, and long life. It is durable, energy efficient and provides a high degree of flexibility to a wide diversity of industrial applications.

**RELIABILITY** An ice machine you can always depend on. It's backed by over a half-century of innovation and proven performance.

**DURABILITY** Internal stainless steel components include: shaft, ice blade, ice deflector and brackets, squeegee wrapper and brackets. NO galvanized parts inside ice flaker.

**HIGH QUALITY ICE** Super-cold, dry, crisp, 100% sub-cooled ice with greater surface area and exceptional cooling power. Draws heat away quickly and evenly for superb process cooling applications.

**FLEXIBILITY** A diversity of refrigerants, electrical options and condenser configurations are available to meet any need.

### LOW MAINTENANCE

Substantially lower maintenance requirements than most other brands of ice equipment.

**ENERGY-EFFICIENT** Requires significantly less energy per pound of ice produced than most other brands of ice equipment.

### APPLICATIONS

- Produce Harvesters
- Produce Wholesalers
- Industrial Bakeries
- Seafood Processors
- Seafood Distributors
- Meat Processors
- Sausage Processors
- Poultry Processors
- Concrete Cooling
- Industrial Catering

### TWO PACKAGES TO CHOOSE FROM:

#### STANDARD PACKAGE INCLUDES:

- Photo eye ice level control
- Liquid Line Strainer
- Relief valve
- Low water cut out

#### PREMIUM PACKAGE INCLUDES:

Includes above plus:

- Low ambient kit
- NEMA4-TEFC wash down



6000-RLR shown.



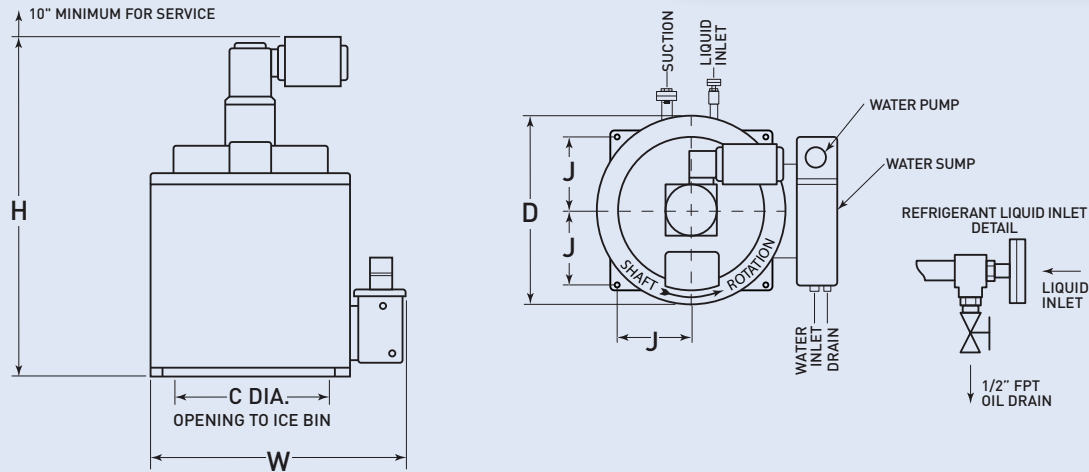
### 100% ICE PRODUCTION/24HRS

MODEL	REMOTE* LBS	KG
51-RLR	10,000	4,540
76-RLR	15,000	6,810
101-RLR	20,000	9,080

\* All data given at 90°F (21°C) air / 70°F (21°C) water.

# RECIRCULATED AMMONIA

Selective Purpose Ice Flaker



	DIMENSIONS (IN)						CONNECTION SIZES					PRODUCTION		WATER	REFRIGERATION REQUIREMENT *		NH3 RECIRC RATE	Approx. AMMONIA CHARGE	
	C	D	H	J	W	LBS	SUCTION	LIQUID	OIL DRAIN	RELIEF VALVE	WATER	LBS	KG	G.P.M	BTU/HR	Kcal			
6000-RLR	18	27 1/2	50	10 3/4	31 1/2	720	1 1/2	3/4	1/2	1/2	3/8	6,000	2724	.5	54,000	13610	3:1	22	
51-RLR	30	30	60	16 1/4	57	1500	2	3/4	1/2	1/2	1/2	10,000	4540	.85	90,000	22680	3:1	75	
76-RLR	30	30	72	16 1/4	57	2100	2	3/4	1/2	1/2	1/2	15,000	6810	1.25	135,000	34020	3:1	125	
101-RLR	30	30	79	16 1/4	57	2500	2 1/2	1	1/2	1/2	1/2	20,000	9080	1.65	180,000	45360	3:1	150	

\* @ -5°F (-20.6°C) SST assuming 70°F (21°C) Water Temperature

## ELECTRICAL

MODEL	230/1/60						460/3/60						380/3/50**					
	DRIVE MOTOR		WATER PUMP		MIN CIRCUIT AMPS	MAX FUSE	DRIVE MOTOR		WATER PUMP		MIN CIRCUIT AMPS	MAX FUSE	DRIVE MOTOR		WATER PUMP		MIN CIRCUIT AMPS	MAX FUSE
	HP	FLA	HP	FLA	AMPS		HP	FLA	HP	FLA	AMPS		HP	FLA	HP	FLA	AMPS	
6000-RLR	½	4.3	-	1.95	8	15	NOT AVAILABLE						½	1.5	-	1.95	5	15
51-RLR	1	6.8	1/8	1.05	15	20	1	1.8	1/6	.35	5	15	1	2.4	1/8	1.1	7	15
76-RLR	1	6.8	1/8	1.05	15	20	1	1.8	1/6	.35	5	15	1	2.4	1/8	1.1	7	15
101-RLR	1	6.8	1/8	1.05	15	20	1	1.8	1/6	.35	5	15	1	2.4	1/8	1.1	7	15

Standard NEMA 1 control panel is shipped loose for field installation. [Optional NEMA4 enclosure is available with NEMA4/TEFC kit] Drive motor is standard ODP [open drip proof] [TEFC motor is available with optional NEMA4/TEFC kit]. Rapid Freeze ice flakers require a condensation drip pan to be fabricated and installed under flaker, but above the storage bin. Drip pan shall be constructed to prevent condensation from entering ice storage bin. \*\* 380/3/50 drive motor, 220/1/50 water pump

Accessories included with the ice flaker as standard are: Safety relief valve, liquid line strainer, control panel, & companion flanges. Optional valve accessory kits include: liquid line solenoid valve, dual pressure regulator, hand expansion valve, suction stop, liquid stop & oil drain valves.

**HOWE®**

1650 N. Elston Ave., Chicago, IL 60642-1585 | 773 235 0200 | Fax 773 235 0269  
howecorp.com | howeinfo@howecorp.com

