

# Rapid Freeze Large Capacity

## AC Condensing Units

COOL SOLUTIONS SINCE 1912

## HOWE Proven. Best Choice.

Howe's 51, 76, 101 series condensing units are sized and configured to match Howe Rapid Freeze ice flakers. These units are designed for unexcelled quality, reliability, and long life. They are durable, energy efficient and they provide a high degree of flexibility to a wide diversity of industrial applications.

### STANDARD FEATURES

- High efficiency Copeland discus compressors with POE Oil.
- Thermally protected permanently lubricated ball bearing condenser fan motors.
- Electrical controls including compressor contactor and ice flaker interconnect wiring are located easily accessible control box with hinged cover.
- Head pressure control system
- Suction & liquid vibration eliminators.
- Liquid line filter-drier and sight glass.

### SPECIAL FEATURES

- Contact points for remote pumpdown (Service pump-down).
- Suction Accumulator
- Oil Separator with oil return line.
- Separate high pressure, low pressure control switches
- Heater & insulation on receiver (Std amb., not included with moderate units).

### OPTIONAL FEATURES

- Coated condenser coils for harsh environments.
- Oversized condensing units rated for 110°F ambient conditions.

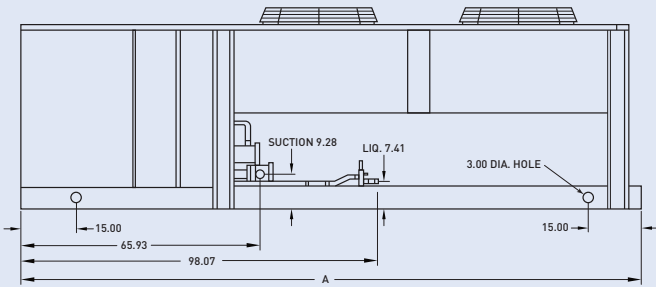


LA101-A-R404A-1 shown.

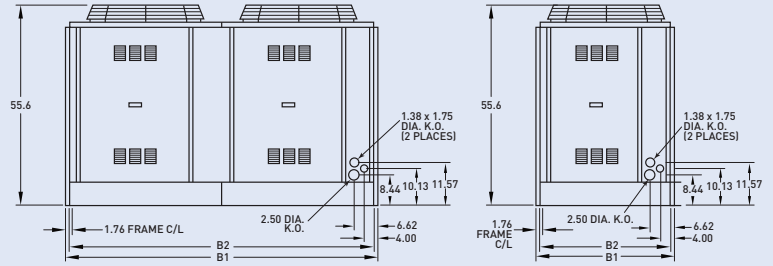


MADE IN USA!

## SIDE VIEW



## END VIEWS



## CONDENSING UNIT

MODEL	DIMENSIONS IN				CM	CONNECTION SIZES			SHIPPING WEIGHT		
	A	B1	B2	H		A	B	H	SUCTION	LIQUID	LBS
LA51-A-R404A-*	144	44½	42½	55⅝	366	113	141	2 1/8	7/8	1980	899
LA76-A-R404A-*	170.7	44½	42½	55⅝	434	113	141	2 1/8	7/8	2370	1076
LA101-A-R404A-*	144	87	85	55⅝	366	224	141	2 5/8	1 1/8	3600	1635
LA102-A-R404A-*	144	87	85	55⅝	366	224	141	(2) 2 1/8	(2) 7/8	3600	1635

\*= 1 for 230/3/60, 2 for 380/3/50, 3 for 460/3/60, 4 for 575/3/60

## ELECTRICAL R-404A

VOLTAGE	MODEL	COMPRESSOR		CONDENSER FAN MOTORS		UNIT	
		RLA	LRA	QUANTITY	FLA (EACH)	MCA	MOP
208-230/3/60	LA51-A-R404A-1	52.6	278	2	8.0	67.0	110
	LA76-A-R404A-1	80.8	450	2	14.0	104.5	175
	LA101-A-R404A-1	52.6 x 2	278 x 2	4	16.0	122.2	150
460/3/60	LA51-A-R404A-3	26.3	139	2	4.0	34.0	50
	LA76-A-R404A-3	40.4	225	2	7.0	52.0	80
	LA101-A-R404A-3	26.3 x 2	139 x 2	4	8.0	61.1	80
575/3/60	LA51-A-R404A-4	20.9	113	2	5.0	28.1	45
	LA76-A-R404A-4	32.5	172	2	6.0	42.1	70
	LA101-A-R404A-4	20.9 x 2	113 x 2	4	3.0	71.0	90
380/3/50	LA51-A-R404A-2	33.0	187	2	8.0	40.0	60
	LA76-A-R404A-2	47.8	235	2	14.0	61.0	100
	LA101-A-R404A-2	33.0 x 2	187 x 2	4	8.0	145.8	200

Electrical specs for 102-RHS are same as 101-RHS. 102-RHS has two separate refrigeration circuits. Suction accumulator is provided with Howe furnished condensing unit.

