

Howe 3 - Phase Ice Flaker Warranty Registration

It is Howe Corporation's requirement that the refrigeration contractor insert the following information when installing Howe Flake Ice Equipment. Once completed, please fax this document to Customer Service at Howe Corporation at fax number 773-235-0269. Any questions, please call 773.687.4940

Howe Ice Flaker Model # _____ Serial # _____

Name of Ultimate User _____

Refrigeration Company Name _____

Address _____

City _____ St. _____ Zip _____

Phone _____

Technician's name (PRINT) _____

Installation Date: _____

Refrigerant (check one) R-404a _____ R-22 _____ R-507 _____ Other _____

Ice Machine Connected to: Rack _____ Condensing Unit _____

Location of EPR Valve (check or list one below).

At Rack _____ At Ice Flaker _____ List other location _____

EPR Valve Model # _____

EPR Valve Model # _____

Are there bubbles in the sight glass Yes _____ No _____

Water level in distribution pan $\frac{1}{2}$ - $\frac{3}{4}$ full? (Check ball valve) Yes _____ No _____

Suction pressure of Flaker's evaporator, measured at Schrader valve on suction line at outlet of evaporator _____ PSIG

Suction pressure of Flaker's evaporator, measured at Schrader valve on suction line at outlet of evaporator _____ PSIG

Photo Eyes Installed : Yes _____ No _____

Note: The Howe Flaker's TXV adjustment needs to be made while looking at the evaporator's freezing surface, through the opening at the top of the ice flaker barrel. When TXV is adjusted properly, the freezing surface should be uniformly covered by one continuous sheet of ice, from the top of the evaporator, all the way to the bottom. Often times, TXV must be opened for proper adjustment.

Refer to Quick Step Guide and or Installation & Service Manual for recommended factory settings

After TXV is adjusted per factory setting, place a check mark on the photo below which most closely resembles the look of the sheet of ice on the Ice Flaker's evaporator.

Improperly adjusted



Check here

Properly adjusted



Or check here

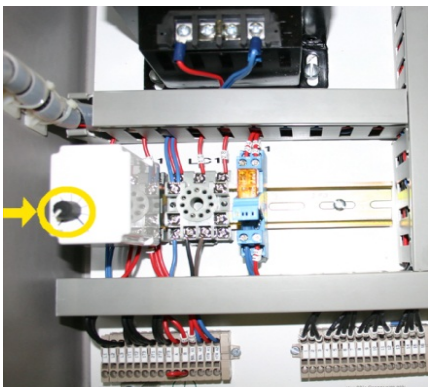
Once TXV is adjusted, determine the superheat setting of the evaporator. ____ Degrees F.

Superheat doesn't necessarily indicate the TXV is adjusted correctly. However, it can confirm TXV is not adjusted correctly.



After proper adjustment (referenced on the Quick Step Guide) record overload setting.

Motor & Pump overload set point _____



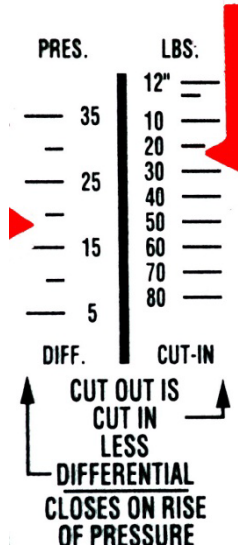
After proper adjustment (referenced on the Quick Step Guide) record off delay timer set point.

Off delay timer set point _____

Refer to Quick Step Guide and or Installation & Service Manual for recommended factory settings

Condensing unit settings for split systems

Low Pressure Control



Condenser Fan Switch
(When applicable)



Set @ _____°F

Cut in setting _____Lbs

Differential setting
_____Pressure

Refer to Quick Step Guide and or Installation & Service Manual for recommended factory settings